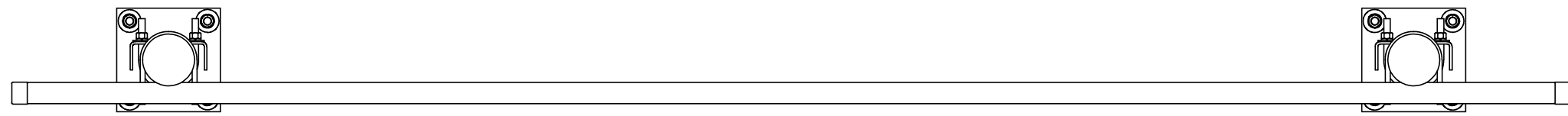
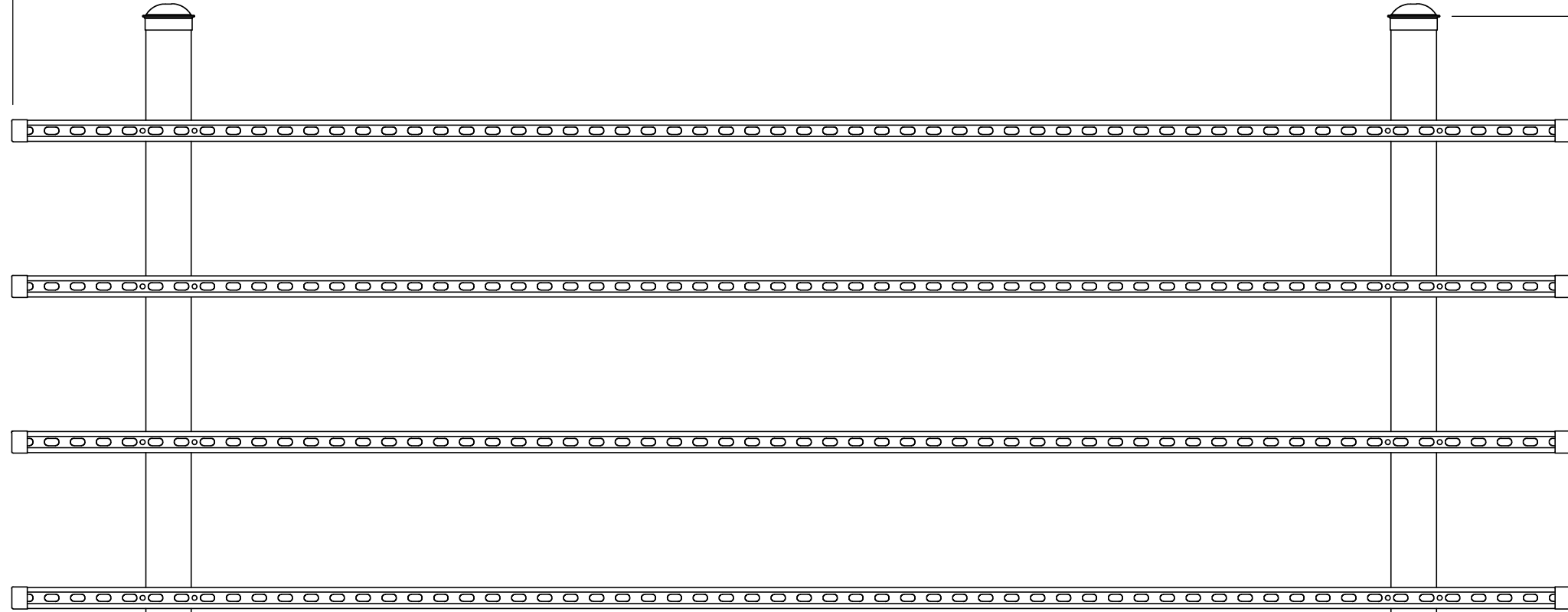


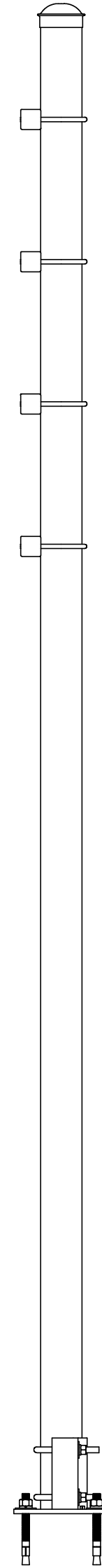
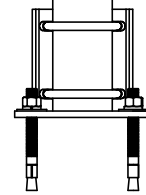
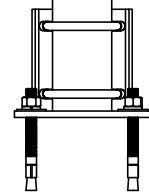
ITEM	PART NO.	DESCRIPTION	HF4R	HF5R	WEIGHT
1	MT547126	Ø 3.5" O.D. X 10'6" (126") STRUCTURAL TUBE	2	2	61.93 LBS
2	MT504	SQUARE SUPPORT RAIL, 12 GA, SLOTTED, 120"	4	5	20.35 LBS
3	PC034	Ø 3-1/2" O.D. PIPE CAP	2	2	0.74 LBS
4	ENDCAPW	CAP, STRUT END, WHITE 1-1/2" X 1-1/2"	8	10	0.04 LBS
5	GUB3355	3/8"-16 UNC X 3-5/8" X 5-1/4" GALV U-BOLT KIT	8	10	0.41 LBS
6	WBBS2	BASE SHOE FOR Ø 3-1/2" O.D. PIPE	2	2	14.18 LBS



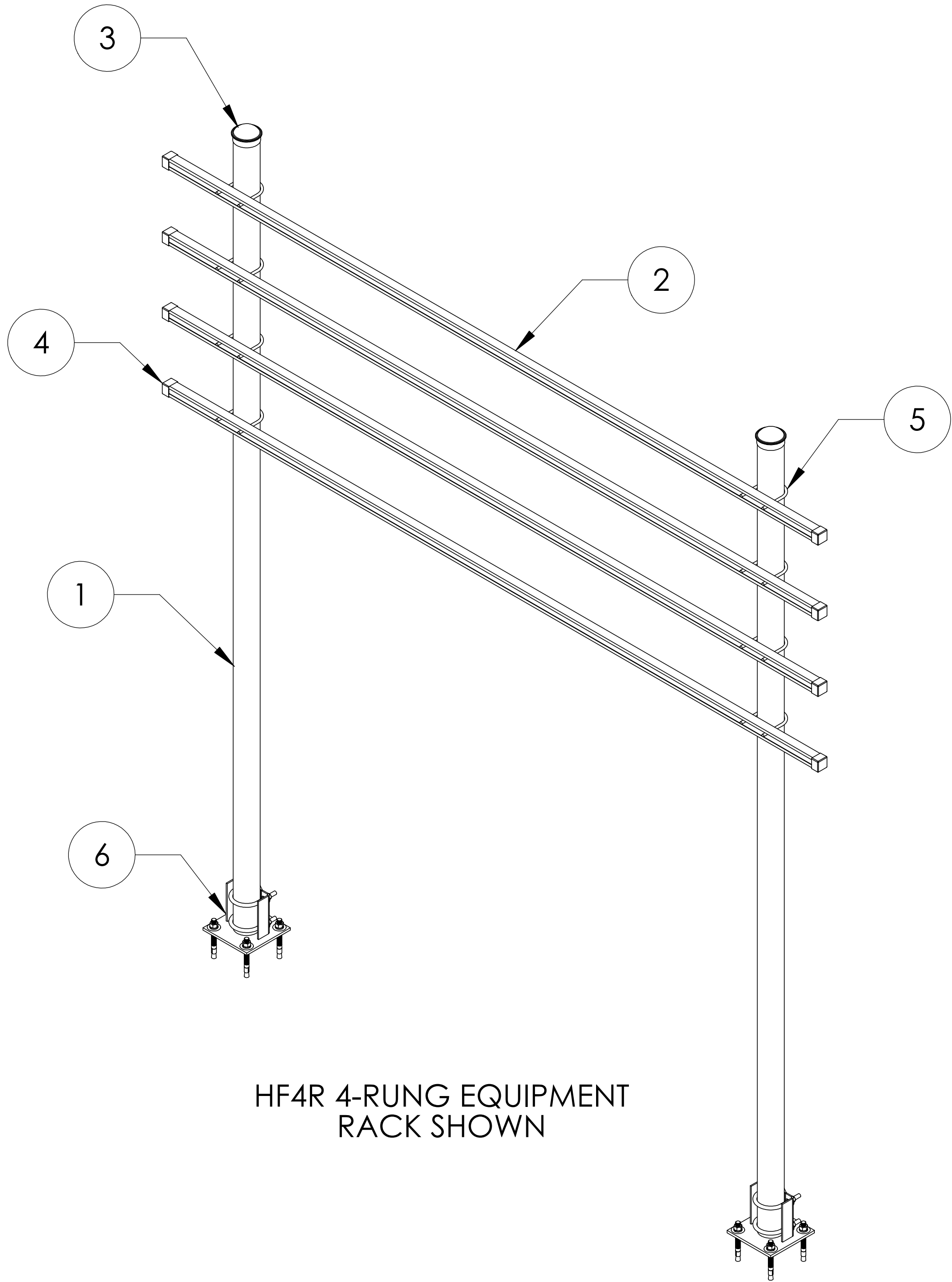
10'-0" [3048.0]



10'-6" [3200.4]




REVISIONS				
REV.	ZONE	DESCRIPTION	BY	DATE
A		INITIAL RELEASE	ACG	12/09/22
B		REPLACE WBBS WITH WBBS2	ACG	03/07/24



HF4R 4-RUNG EQUIPMENT RACK SHOWN

NOTES:
1. ALL METRIC DIMENSIONS ARE IN BRACKETS.

These drawings and specifications are proprietary property and may be used only for the specific purpose authorized in writing.		
ALL DIMENSIONS ARE IN INCHES U.O.S. TOLERANCES UNLESS OTHERWISE SPECIFIED:		
.X = ± .06	ANGLES	±2'
.XX = ± .03	FRACTIONS	±1/32
.XXX = ± .010		
REMOVE BURRS AND BREAK EDGES .005		
DO NOT SCALE THIS PRINT		

DRAWN BY: ACG	SHEET: 1 of 1	PART NUMBER: FM-HFxR Series
CHECKED BY: MKV	SCALE: NTS	DESCRIPTION: H-FRAME 4 or 5 RUNG EQUIPMENT RACK
DATE: 12/09/22	MATERIAL: ASTM A36, A500	DRAWING TYPE: ASSEMBLY DRAWING
REVISION: B	FINISH: ASTM A123	
	WEIGHT: 238.72 LBS	